



PEARL GLOBAL

Exceeding Expectations...Always

Investor Presentation

November 2022

This presentation has been prepared by and is the sole responsibility of **Pearl Global Industries Limited** (the “Company”). By accessing this presentation, you are agreeing to be bound by the trailing restrictions.

This presentation does not constitute or form part of any offer or invitation or inducement to sell or issue, or any solicitation of any offer or recommendation to purchase or subscribe for, any securities of the Company, nor shall it or any part of it or the fact of its distribution form the basis of, or be relied on in connection with, any contract or commitment thereof. In particular, this presentation is not intended to be a prospectus or offer document under the applicable laws of any jurisdiction, including India. No representation or warranty, express or implied, is made as to, and no reliance should be placed on, the fairness, accuracy, completeness or correctness of the information or opinions contained in this presentation. Such information and opinions are in all events not current after the date of this presentation. There is no obligation to update, modify or amend this communication or to otherwise notify the recipient if the information, opinion, projection, forecast or estimate set forth herein, changes or subsequently becomes inaccurate.

Certain statements contained in this presentation that are not statements of historical fact constitute “forward-looking statements.” You can generally identify forward looking statements by terminology such as “aim”, “anticipate”, “believe”, “continue”, “could”, “estimate”, “expect”, “intend”, “may”, “objective”, “goal”, “plan”, “potential”, “project”, “pursue”, “shall”, “should”, “will”, “would”, or other words or phrases of similar import. These forward-looking statements involve known and unknown risks, uncertainties, assumptions and other factors that may cause the Company’s actual results, performance or achievements to be materially different from any future results, performance or achievements expressed or implied by such forward-looking statements or other projections. Important factors that could cause actual results, performance or achievements to differ materially include, among others: (a) our ability to successfully implement our strategy, (b) our growth and expansion plans, (c) changes in regulatory norms applicable to the Company, (d) technological changes, (e) investment income, (f) cash flow projections, and (g) other risks.

This presentation is for general information purposes only, without regard to any specific objectives, financial situations or informational needs of any particular person. The Company may alter, modify or otherwise change in any manner the content of this presentation, without obligation to notify any person of such change or changes.



**Designs
that
make
the
headlines!**



H1FY23 Highlights



Commenting on the Results, Mr. Pulkit Seth, Vice-Chairman & Non-Executive Director, said, “While the short-term macro environment seems arduous on the back of various global factors, we are soon becoming a preferred player in the ecosystem of our global customers. Having said this, in the long-term, the macro economic factors do not pose a major challenge, with the growing preference for geographies where Pearl Global is a supplier, input prices subsiding, our widespread geographic presence and deep entrenched networks & relationships with a marquee clientele list.”



Commenting on the Results, Mr. Pallab Banerjee, Managing Director said, “I am happy to state that the growth momentum continued for us during the first half of FY23 and we achieved a pathbreaking highest ever H1 revenue. Our capacity utilization has improved substantially which has increased the overall efficiency of our operations. On the geographic mix of sales, overseas sales have grown on the back of increase in average realisation while domestic sales have risen due to increased volumes and increase in average realization. With the backdrop of global macro challenges, we are focused on the geographical diversity in our customer base. This should help us to maintain our overall business share and operational efficiencies.”





Revenue
Rs. 1,711.4 CRS. ▲ 53%

Highest ever half yearly revenue since inception on account of :

- Better product mix
- Increase in contribution from in house and partnership factory
- Improved capacity utilizations in Vietnam and Bangladesh



**Partnership
Facility**



Partnership factory contribution to overall revenue on a standalone basis is approximately 21% in H1FY23



Internal Auditor

Appointed E&Y as internal auditor for Pearl Global Industries India Limited



ROCE*
20.4% ▲ +800 bps

ROCE improved by 800 bps to 20% in H1FY23 from 12.4% in FY22

due to:

- Improved asset turns
- And improvement in capacity utilization



Interim Dividend

- The Board has recommended an interim dividend for FY23 of Rs. 2.5 per share for a face value of Rs 10 each



EBITDA Margin
7.0% ▲ +180 bps

EBITDA Margins improved by 180 bps to 7.0% in H1FY23 from 5.2% in H1FY22 due to:

- Improved operating efficiency in Vietnam and Bangladesh
- Operating leverage kicking in due to increase in volumes

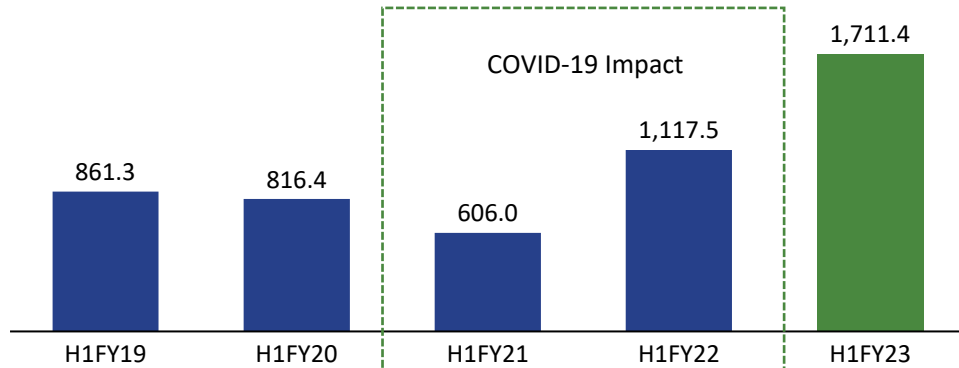
*ROCE calculated on a TTM basis for H1FY23



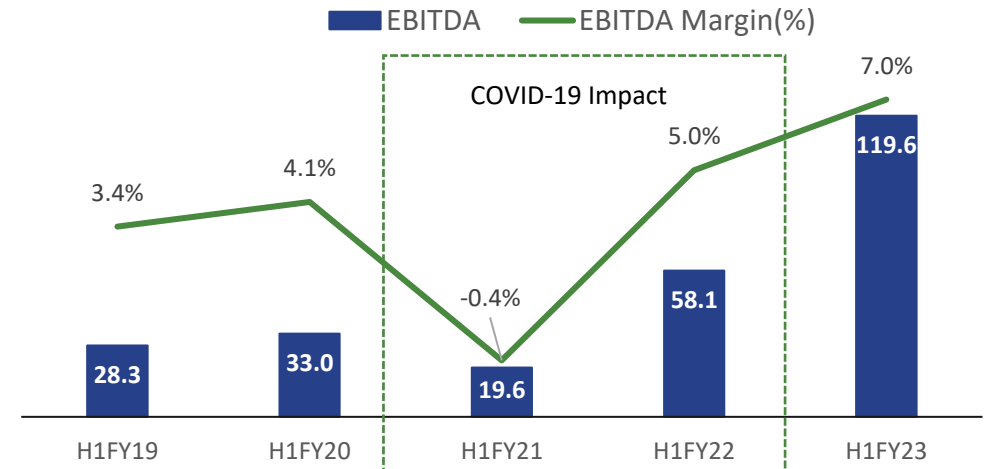
Highest Ever Consolidated H1 Revenue

INR CRS.

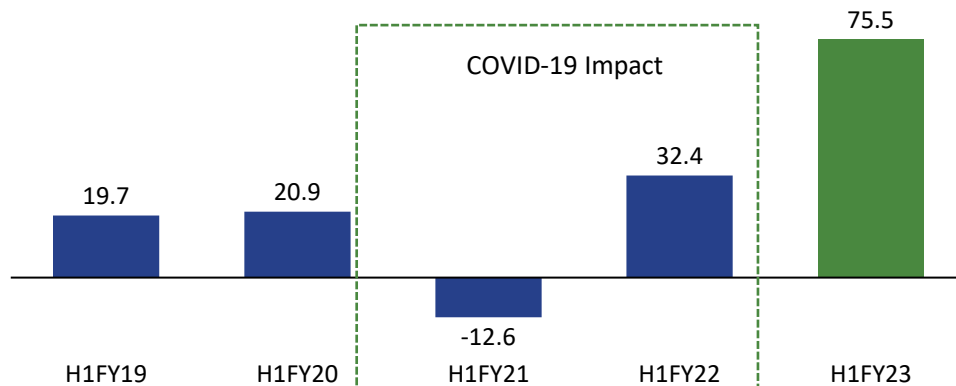
Revenue



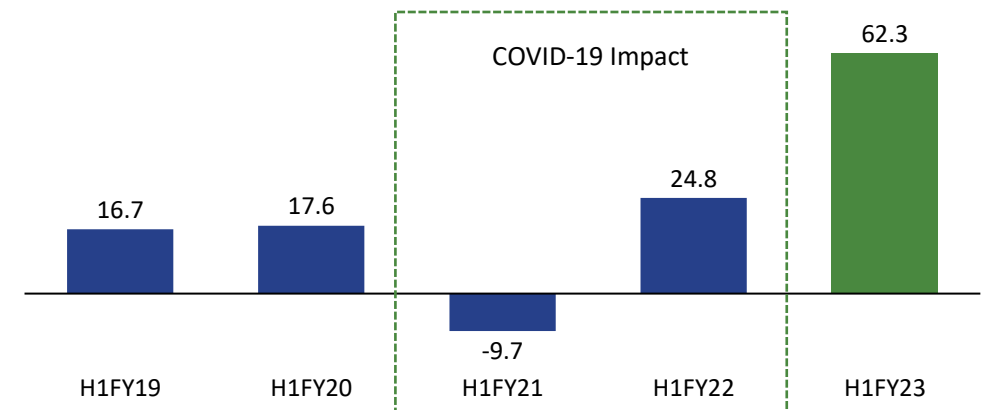
EBITDA



PBT

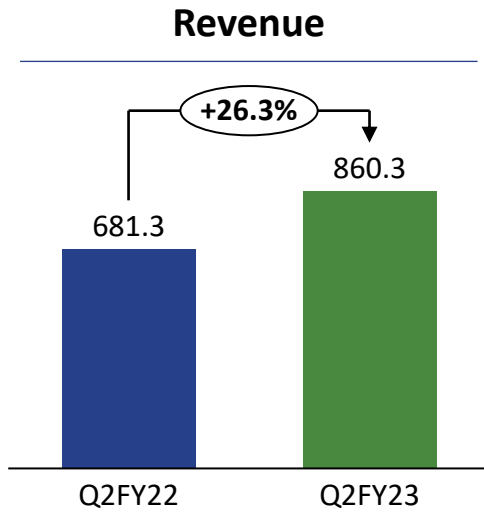


PAT

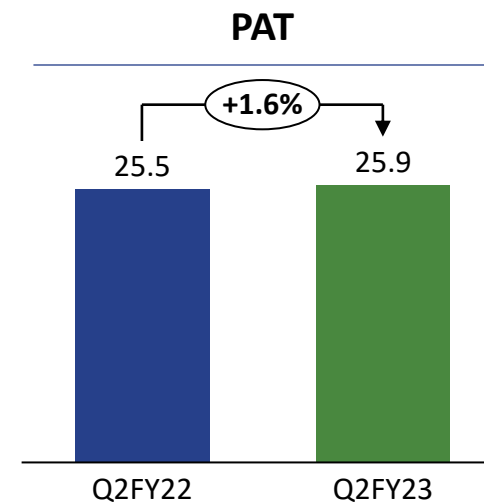
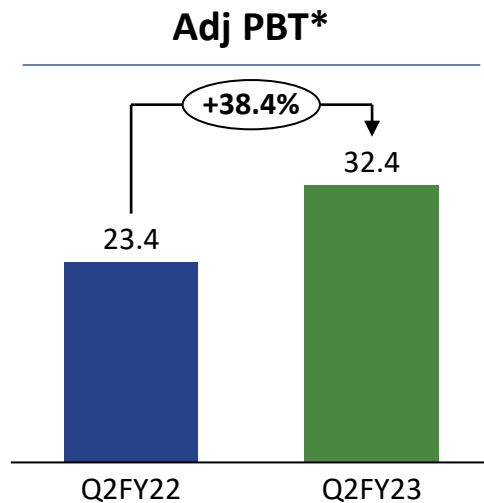
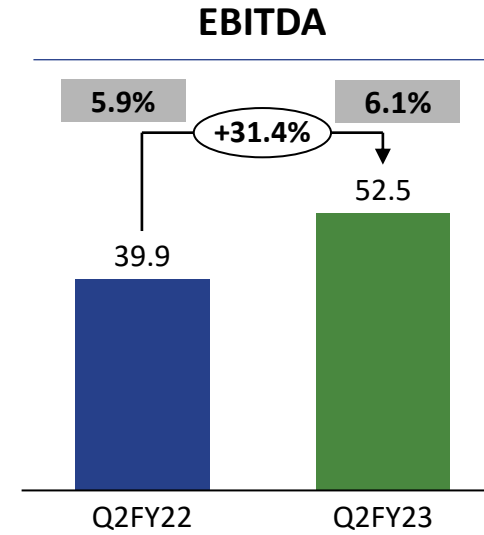


Consolidated Performance Highlights Q2FY23

INR CRS.



Margin (%)



*Adj PBT excludes exceptional gain of Rs 6.5cr in Q2FY22 and a loss of Rs 40 lakhs in Q2FY23

Consolidated Profit and Loss Statement - Q2 & H1FY23

Profit and Loss (INR CRS.)	Q2 FY23	Q2 FY22	Y-o-Y	Q1 FY23	Q-o-Q	H1FY23	H1FY22	Y-o-Y
Revenue from Operations	860.3	681.3	26.3%	851.1	1%	1711.4	1117.5	53.1%
Cost of Goods Sold	465.9	369.8		473.8		939.7	597.7	
Gross Profit	394.4	311.5	26.6%	377.3	5%	771.7	519.8	48.5%
Gross Profit Margin	45.8%	45.7%		44.3%		45.1%	46.5%	
Employee Cost	137.8	118.3		135.7		273.6	209.9	
Other Expenses	204.1	153.2		174.5		378.6	251.8	
EBITDA	52.5	39.9	31.4%	67.1	-22%	119.6	58.1	105.7%
EBITDA Margin	6.1%	5.9%		7.9%		7.0%	5.2%	
Depreciation	12.0	12.6		12.3		24.3	24.1	
Other Income	7.7	5.0		6.2		13.9	12.7	
EBIT	48.1	32.3	49.0%	61.0	-21%	109.2	46.7	133.6%
EBIT Margin	5.6%	4.7%		7.2%		6.4%	4.2%	
Finance Cost	15.8	8.9		15.5		31.3	20.8	
Exceptional Item Gain / (Loss)	-0.4	6.5		-1.9		-2.3	6.5	
PBT	32.0	29.9	6.8%	43.5	-27%	75.5	32.4	133.1%
PBT Margin	3.7%	4.4%		5.1%		4.4%	2.9%	
Tax	6.1	4.4		7.2		13.2	7.6	
PAT	25.9	25.5	1.4%	36.4	-29%	62.3	24.8	151.3%
PAT Margin	3.0%	3.7%		4.3%		3.6%	2.2%	
EPS	10.68	11.31		16.84		27.52	11.39	

Q2FY23 Revenue increased by 26% YoY:

- Revenue increase is largely on account of growth in India. Standalone revenue increased by 38%

H1 Revenue increased by 53% YoY:

- Revenue increase is on account of increase in overseas revenue by 30% and India by 60%
- In overseas increase is mainly on account of improved realisations, whereas in India it is combination of increase in number of pieces shipped along with improved realisations
- In India revenue Partnership factory contribution to overall revenue increased from 9% to 21%

EBITDA Margin:

- Y-o-Y margin has improved because of product mix, Operating leverage and operational efficiency

Exceptional loss:

- This includes interest cost payable on advance refundable to DLF



Consolidated Balance Sheet as on 30th Sept, 2022

Assets (INR CRS.)	Sep-22	Mar-22
Non - Current Assets	599.9	533.9
Property Plant & Equipment	282.9	258.2
CWIP	21.4	15.2
Goodwill	19.1	18.0
Intangible assets	1.1	0.7
Right of use asset	114.8	111.7
Investment Properties	58.9	59.0
Investment - Others	53.5	49.9
Loans	1.4	1.3
Other Financial Assets	17.7	11.0
Deferred Tax Assets (Net)	5.7	0.9
Non-Current Tax Assets (Net)	23.0	6.0
Other Non Current Assets	0.4	2.1
Current Assets	1,051.0	1,246.7
Inventories	480.5	539.6
Financial Assets		
(i) Investments	30.0	5.3
(ii) Trade receivables	153.8	366.6
(iii) Cash and cash equivalents	150.0	116.9
(iv) Bank balances	36.7	32.9
(v) Loans	28.3	34.6
Other Financial Assets	22.5	5.9
Other current assets	149.2	144.9
Total Assets	1650.9	1780.6

Equity & Liabilities (INR CRS.)	Sep-22	Mar-22
Total Equity	656.3	614.9
Share Capital	21.7	21.7
Reserves & Surplus	605.9	577.3
Non Controlling Interest	28.8	15.9
Non-Current Liabilities	215.6	254.8
Financial Liabilities		
(i) Borrowings	117.6	123.8
(ii) Lease Liabilities	79.0	71.6
(iii) Other Financial Liabilities	5.8	2.4
Provisions	11.7	24.3
Other Non Current Liabilities	0.5	30.1
Deferred Tax Liabilities	1.1	2.6
Current Liabilities	778.9	911.0
Financial Liabilities		
(i) Borrowings	337.2	440.3
(ii) Trade Payables	365.3	438.7
(iii) Lease Liabilities	8.8	8.8
(iv) Other Financial Liabilities	28.8	9.0
Other Current Liabilities	28.6	9.5
Current tax liabilities (net)	8.9	2.2
Provisions	1.2	2.4
Total Equity & Liabilities	1,650.9	1780.6



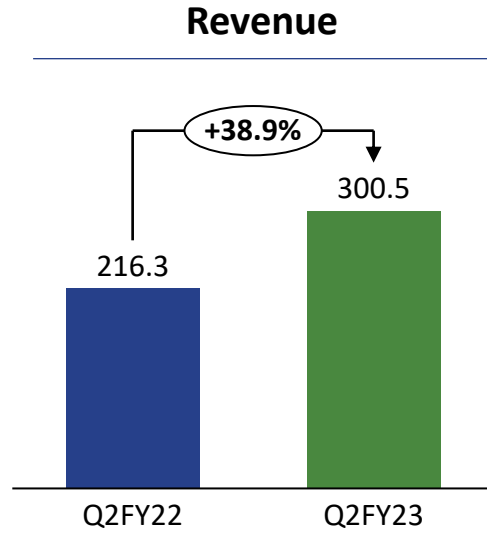
Consolidated Cash Flow

Particulars (INR CRS.)	Sep-22	Sep-21
Net Profit Before Tax	75.5	32.4
Adjustments for: Non -Cash Items / Other Investment or Financial Items	47.0	34.9
Operating profit before working capital changes	122.5	67.3
Changes in working capital	155.3	-98.8
Cash generated from Operations	277.9	-31.5
Taxes paid (net of refund)	-29.8	-4.5
Exceptional Items	2.3	-6.5
Net Cash from Operating Activities	250.4	-42.5
Net Cash from Investing Activities	-61.3	-19.4
Net Cash from Financing Activities	-155.9	31.7
Net Decrease in Cash and Cash equivalents	33.2	-30.2
Add: Cash & Cash equivalents at the beginning of the period	116.9	94.7
Cash & Cash equivalents at the end of the period	150.0	64.5

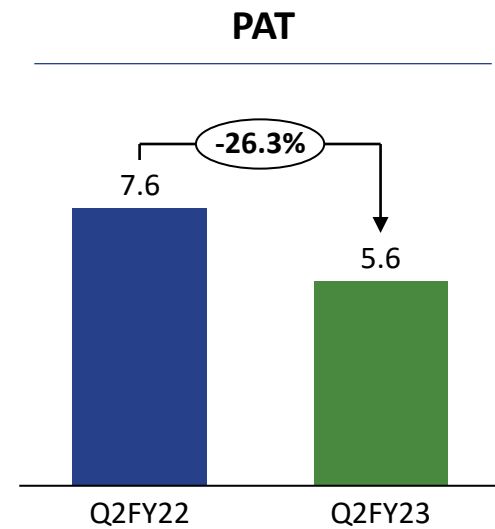
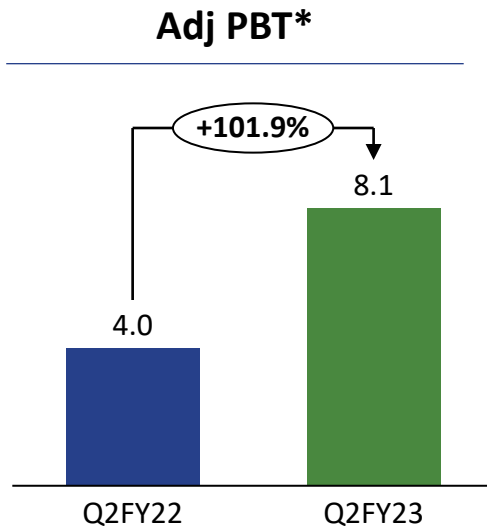
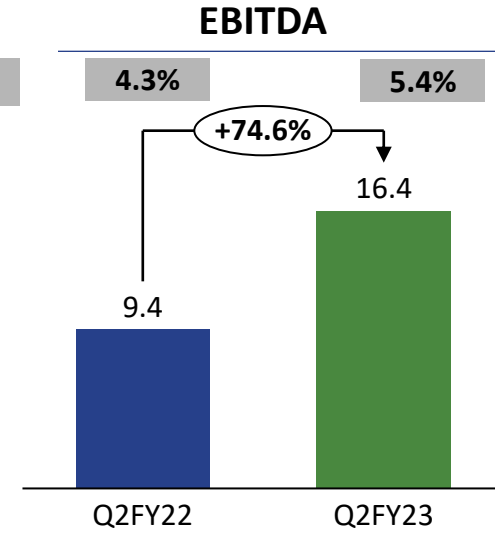


Standalone Performance Highlights Q2FY23

INR CRS.



Margin (%)

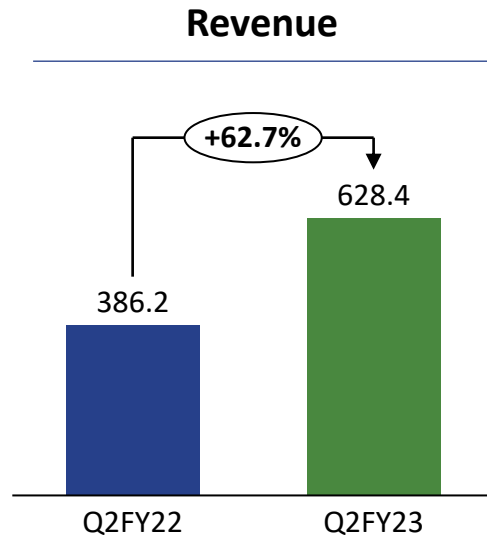


*Adj PBT excludes exceptional gain of Rs 6.4cr in Q2FY22 and a loss of Rs 75 lakhs in Q2FY23

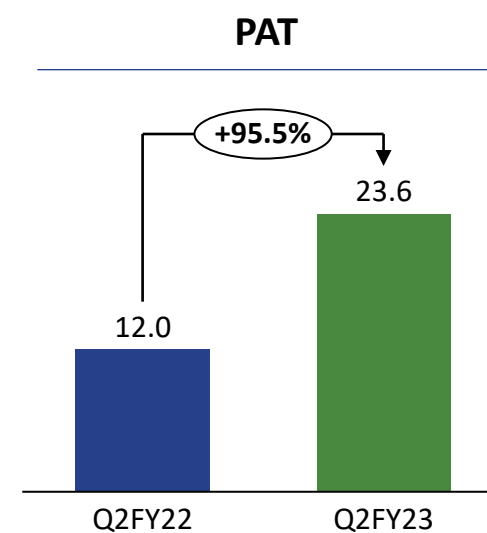
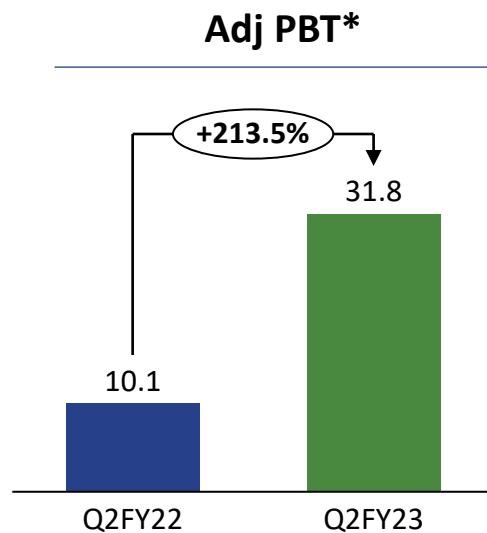
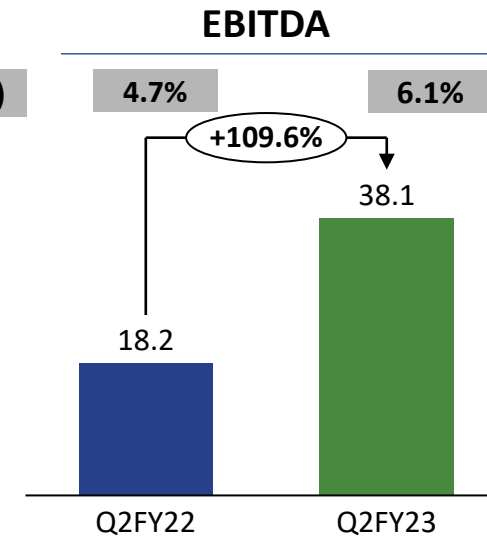


Standalone Performance Highlights H1FY23

INR CRS.



Margin (%)



*Adj PBT excludes exceptional gain of Rs 6.4cr in Q2FY22 and a loss of Rs 75 lakhs in Q2FY23

Standalone Profit and Loss Statement – Q2 & H1FY23

Profit and Loss (INR CRS.)	Q2 FY23	Q2 FY22	Y-o-Y	Q1 FY23	Q-o-Q	H1FY23	H1FY22	Y-o-Y
Revenue from Operations	300.5	216.3	38.9%	327.9	-8.3%	628.4	386.2	62.7%
Cost of Goods Sold	163.0	98.7		179.3		342.3	178.2	
Gross Profit	137.5	117.6	17.0%	148.6	-7.4%	286.1	208.0	37.5%
Gross Profit Margin	45.8%	54.4%		45.3%		45.5%	53.9%	
Employee Cost	46.6	36.4		45.2		91.8	66.7	
Other Expenses	74.6	71.8		81.6		156.2	123.1	
EBITDA	16.4	9.4	74.6%	21.7	-24.7%	38.1	18.2	109.6%
EBITDA Margin	5.4%	4.3%		6.6%		6.1%	4.7%	
Depreciation	4.2	4.7		4.0		8.3	9.2	
Other Income	3.6	5.1		13.4		17.0	12.9	
EBIT	15.7	9.8	61.3%	31.1	-49.4%	46.8	21.9	114.1%
EBIT Margin	5.2%	4.5%		9.5%		7.4%	5.7%	
Finance Cost	7.6	5.7		7.4		15.0	11.7	
Exceptional Item Gain / (Loss)	-0.7	6.4		-2.1		-2.8	6.3	
PBT	7.4	10.4	-28.9%	21.6	-65.7%	29.0	16.5	76.0%
PBT Margin	2.5%	4.8%		6.6%		9.0%	4.3%	
Tax	1.8	2.7		3.6		5.4	4.4	
PAT	5.6	7.6	-26.8%	18.0	-68.8%	23.6	12.0	95.5%
PAT Margin	1.9%	3.5%		5.5%		7.3%	3.1%	
EPS	2.59	3.53		8.29		10.88	5.56	

Q2FY23 Revenue increased by 39% YoY:

- Revenue increased because of increased contribution from in house and partnership factory
- In house manufacturing increased by 25%
Partnership factory increased by 163%

H1FY23 Revenue increase by 62% Y-o-Y:

- In house revenue increased by 43% and partnership factory revenue grew by 327%
- Partnership factory contribution to overall revenue increased from 9% to 21%

Increase in EBITDA Margin:

- Gross margin percentage is lower because of change in product mix and it has no negative effect on EBITDA
- EBITDA has improved because of operating leverage, operational efficiency and reduction in other expenses as percentage of sales

Exceptional loss :

- This includes interest cost payable on advance refundable to DLF



Standalone Balance Sheet as on 30th Sept,2022

Assets (INR CRS.)	Sep-22	Mar-22
Non - Current Assets	351.3	344.8
Property Plant & Equipment	127.0	124.1
CWIP	0.9	0.0
Goodwill	0.0	0.0
Intangible assets	1.0	0.7
Right of use asset	21.5	21.7
Investment Properties	58.9	59.0
Investment - Others	124.1	126.4
Loans	0.1	0.1
Other Financial Assets	6.8	6.5
Deferred Tax Assets (Net)	5.0	0.0
Other Non Current Assets	0.4	0.5
Non Current Tax Assets (Net)	5.7	5.7
Current Assets	398.4	518.7
Inventories	140.0	221.8
Financial Assets		
(i)Investments	30.0	5.3
(ii) Trade receivables	54.6	115.9
(iii) Cash and cash equivalents	25.5	43.2
(iv) Bank balances	25.5	21.4
(v) Loans	3.1	0.4
Other Financial Assets	0.8	4.9
Other current assets	118.8	105.8
Total Assets	749.7	863.5

Equity & Liabilities (INR CRS.)	Sep-22	Mar-22
Total Equity	341.6	343.5
Share Capital	21.7	21.7
Reserves & Surplus	319.9	321.8
Non Controlling Interest	0.0	0.0
Non-Current Liabilities	111.0	148.9
Financial Liabilities		
(i) Borrowings	72.3	83.3
(ii) Lease Liabilities	22.3	21.5
(iii) Other Financial Liabilities	5.8	2.4
Provisions	10.2	9.3
Other Non Current Liabilities	0.5	30.1
Deferred Tax Liabilities	0.0	2.3
Current Liabilities	297.1	371.1
Financial Liabilities		
(i) Borrowings	133.5	176.3
(ii) Trade Payables	111.3	178.8
(iii) Lease Liabilities	3.3	3.9
(iv) Other Financial Liabilities	21.5	2.4
Other Current Liabilities	21.9	8.5
Current tax liabilities (net)	4.3	0.0
Provisions	1.2	1.1
Total Equity & Liabilities	749.7	863.5

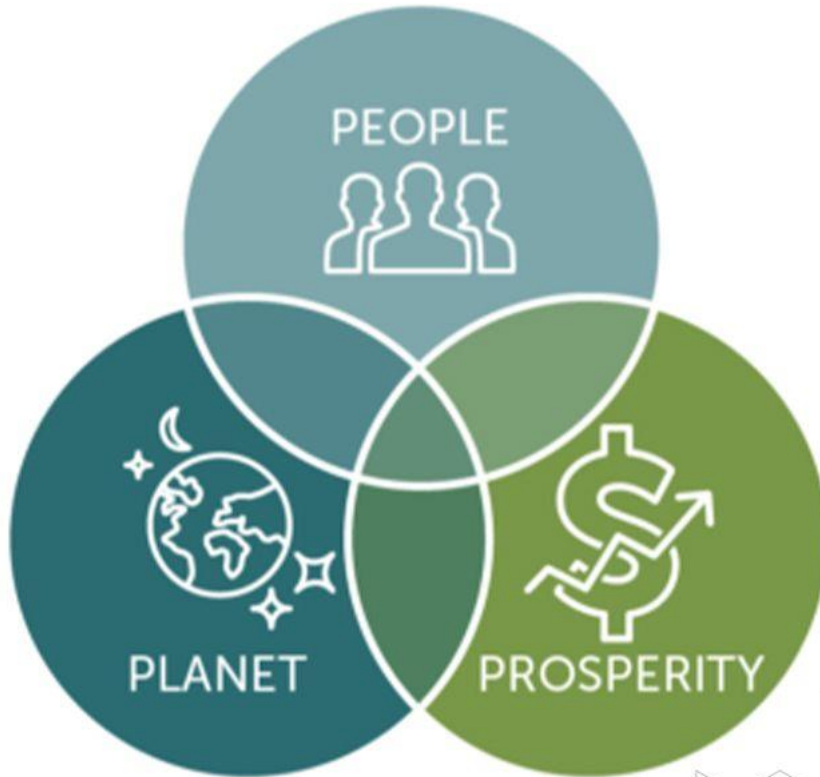


Standalone Cash Flow

Particulars (INR CRS.)	Sep-22	Sep-21
Net Profit Before Tax	29.0	16.5
Adjustments for: Non -Cash Items / Other Investment or Financial Items	10.5	19.8
Operating profit before working capital changes	39.4	36.2
Changes in working capital	56.2	-23.4
Cash generated from Operations	95.6	12.8
Taxes paid (net of refund)	-3.2	-1.6
Exceptional Items	2.8	-6.3
Net Cash from Operating Activities	95.3	4.9
Net Cash from Investing Activities	-31.7	-23.2
Net Cash from Financing Activities	-81.3	-16.5
Net Decrease in Cash and Cash equivalents	-17.7	-34.8
Add: Cash & Cash equivalents at the beginning of the period	43.2	46.0
Cash & Cash equivalents at the end of the period	25.5	11.2



We believe in the **Triple Bottom Line Approach**



Company Overview

Incorporation:

Founded in 1987, Pearl Global is a leading apparel manufacturer offering end-to-end sustainable solutions to the fashion industry

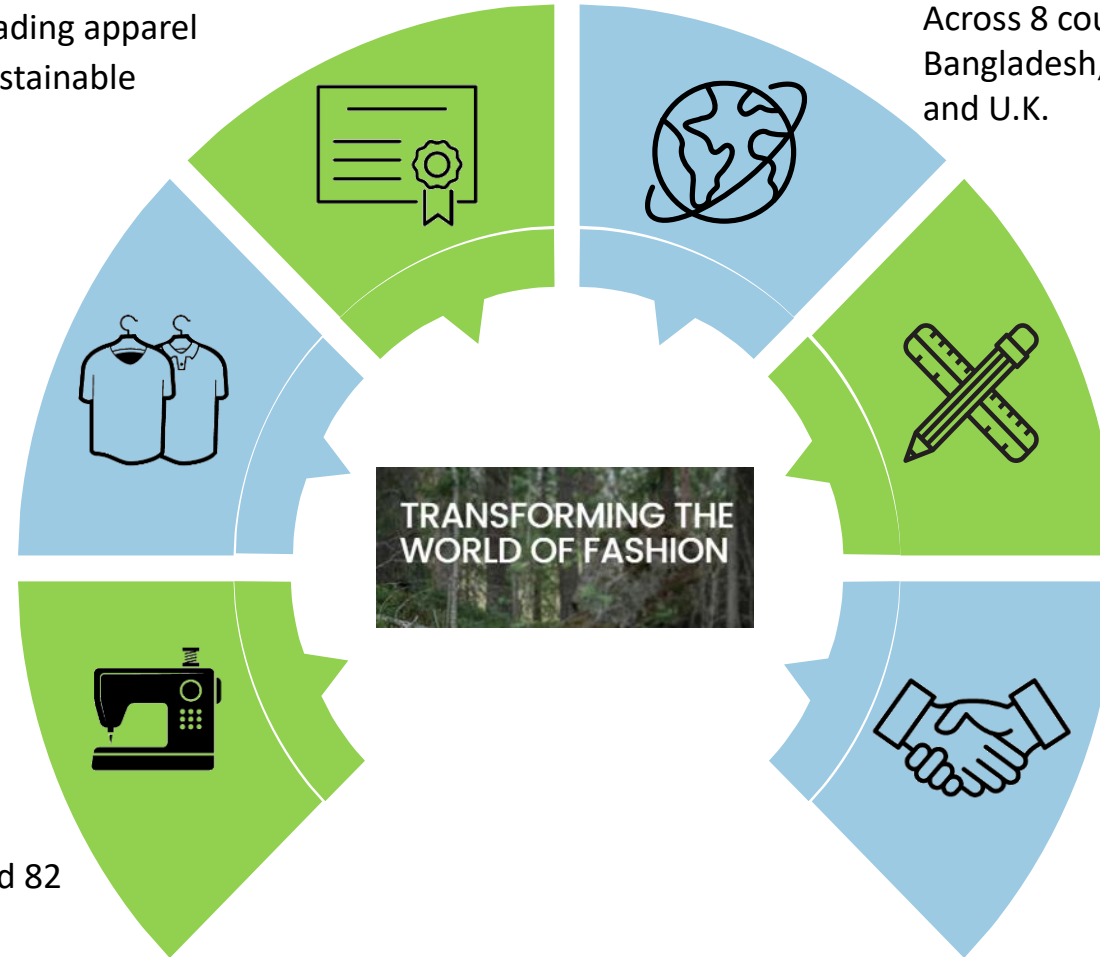
Diversified Product Offering:

Knits, Wovens, Denim, Outerwear, Activewear & Athleisure

Manufacturing Capability:

Well-diversified and de-risked manufacturing base with 22 manufacturing units spread across 8 countries

Total capacity to manufacture around 82 million units per year



Multi-National Presence :

Across 8 countries such as India, Indonesia, Bangladesh, Vietnam, USA, Spain, Hong Kong and U.K.

Robust Design Team:

Our efficient team of 75 Designers across 4 Countries leads the journey from a concept to the finished product

Marquee Clientele:

Kohl's, Macy's, Tommy Hilfiger, Gap, Old Navy, NEXT, Nordstrom among others

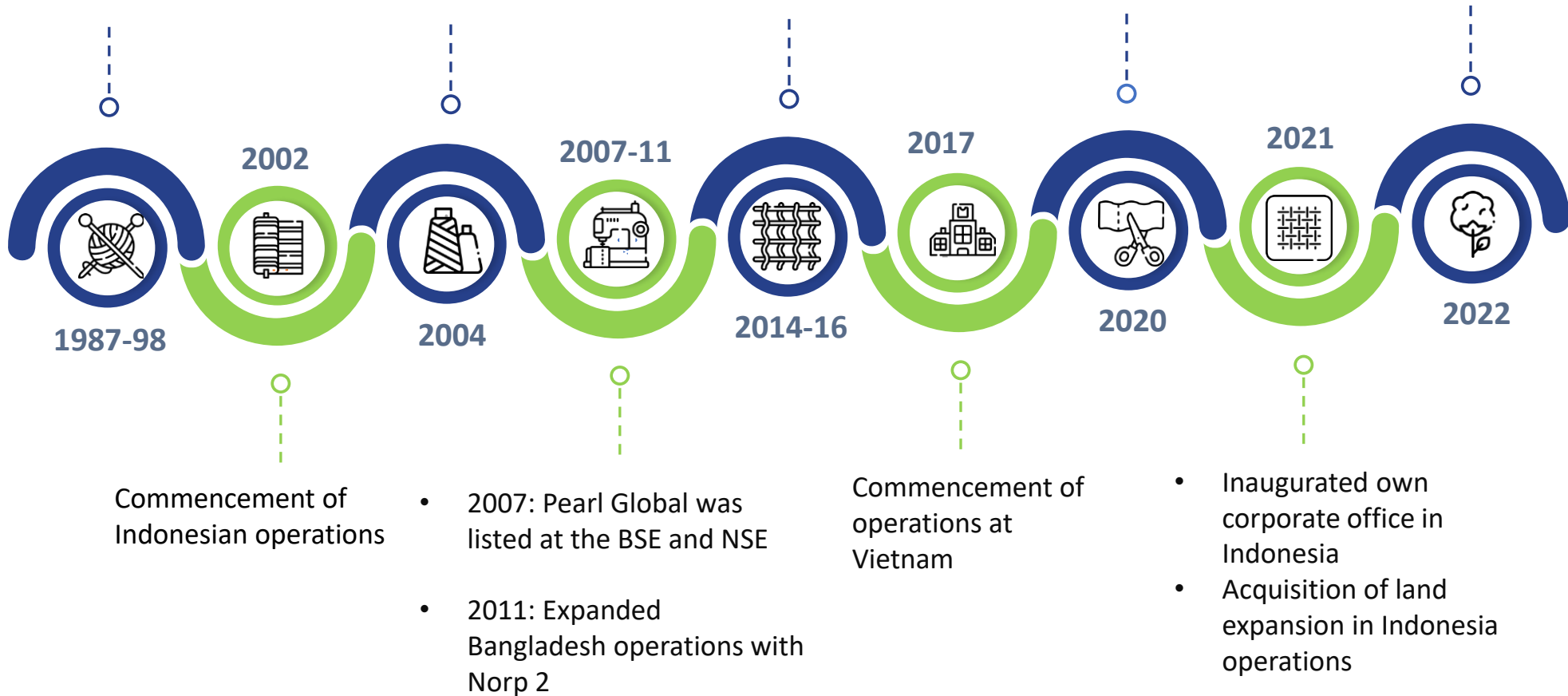
Everything from Fibre to Fashion





Our Journey

- 1987: Pearl Global started operations
- 1998: Established presence in Hong Kong
- Established import and distribution in the U.S.A. and U.K.
- Establishment of Norp 1 in Bangladesh
- 2014: Incorporation of Pearl Bangalore
- 2016: Commencement of operations of Pearl 1 in Chennai
- Commencement of Prudent, Bangladesh
- Acquisition of Alpha unit in BD





Vision

To be the Global Leader providing end-to-end supply chain solutions to the fashion industry



Mission

To continuously exceed customer and shareholder expectations by strategically driving sustainability, technological advancement, and innovative solutions delivered with the best talent in the industry



Goal

To innovate the way Fashion is created across the Globe



PEARL GLOBAL

Exceeding Expectations...Always

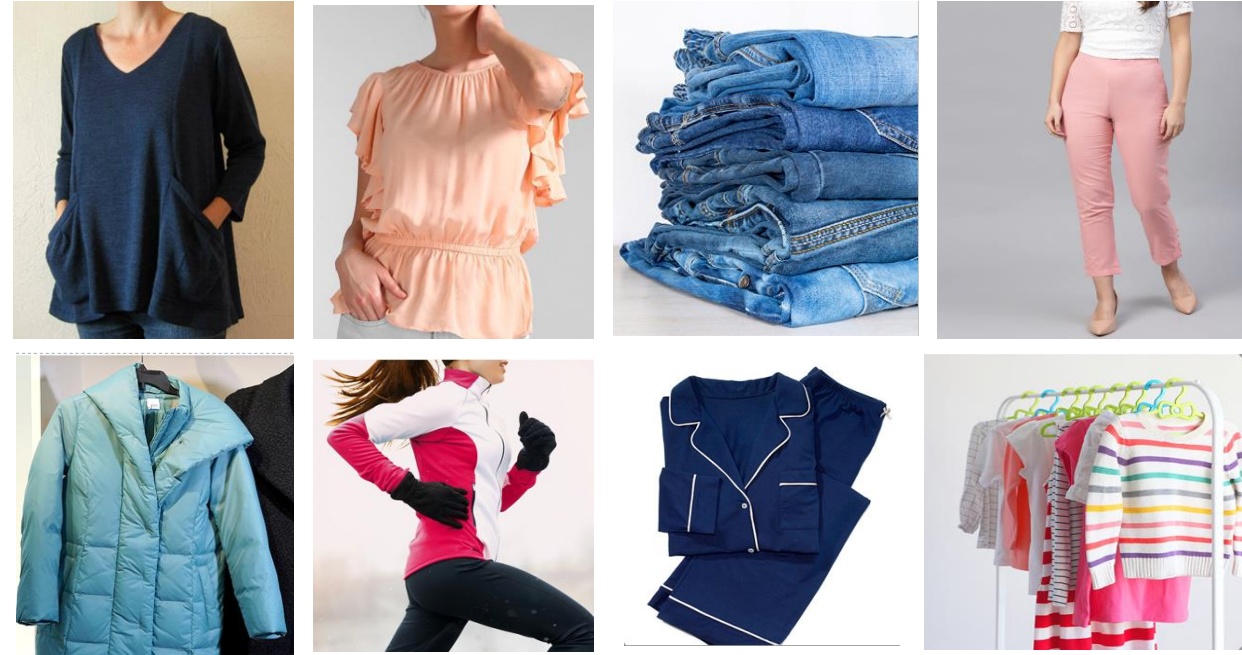
The One-Stop Destination For Your Fashion Line!



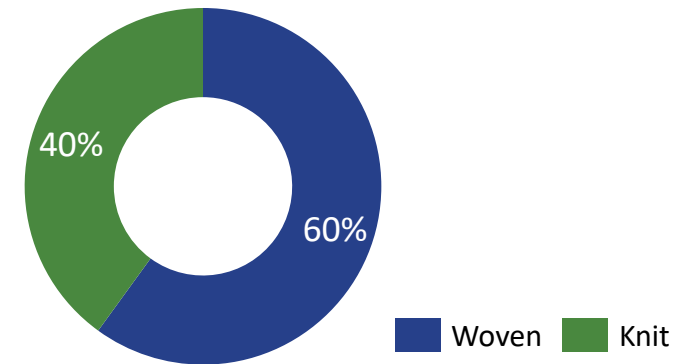
Product Profile

Product Portfolio Across Categories

Gender wise Split	Woven	Knits
Women	Top, Shirt, Long Shirt, Dress Sleepwear, Huddle, legging	Dress, Tops, Skirts, Sweater, T Shirt, Jogger
Men	Shirt, Sleepwear, Pyjama, Polo Tshirt	T Shirts, Hoodies
Boys	Shirts	T Shirt, 2 Pc Set
Girls	Girls Top, Skirts, Dresses	T Shirts, Skirt, Dress, Romper, Tank Top
Toddlers		Romper



PRODUCT WISE SPLIT (Mn Pieces)*



*As of 30th Sept, 2022



MANGO

GAP

★ macy's

GAP

MANGO

**Getting
bigger &
better with
every
collaboration!**

Calvin Klein

Calvin K

GAP
HILFIGER

TOMMY

Calvin Klein

TOMMY  HILFIGER



**Manufacturing
Facilities
&
Key Clientele**

Global Presence Across 8 Countries



Manufacturing Facilities

Location	No of Units	Annual Capacity	Specialization
India	8	28mn pieces p.a.	Woven and Knit products including women's fashion wear, men's wear and kid's wear. South factories make women's tops and dresses
Bangladesh	8	45mn pieces p.a.	Woven and Knitted tops and bottoms for men, women and kids
Vietnam	3	4.5mn pieces p.a.	Multiple products including outerwear and jackets including down jackets, woollen jackets & coats, seam-sealed jackets, puffers, parka's, blazers, anoraks, swim trunks and synthetic bottoms
Indonesia	2	3mn pieces p.a.	Women's professional wear, performance wear, activewear, Woven tops & dresses, sleepwear and loungewear



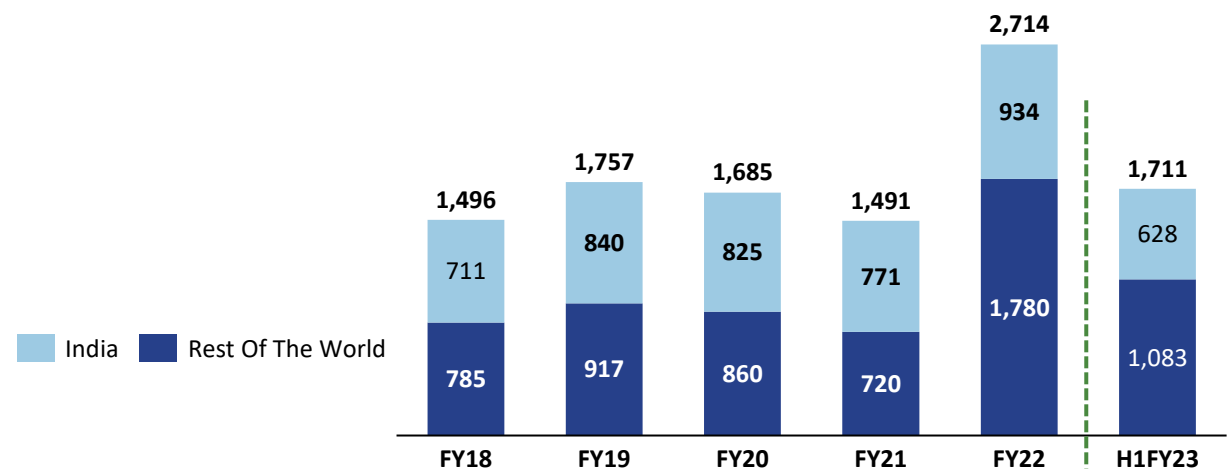
Design and Office Studios Offices

Hong Kong	Design Studio and Sales Office
Spain	Denim jackets, denim bottoms and more
UK	Jerseys, wovens, denims, outerwear, sleepwear, loungewear, beachwear and kidswear
New York	Market intelligence for knits, wovens, denim, outerwear, activewear, sleepwear/ loungewear and childrenwear category



* No of units and Annual capacity includes own manufacturing and partnership

Geographical Revenue Split (INR CRS.)



Large Format Stores

Walmart 

 TARGET

PRIMARK

MUJI
無印良品

Belk


sam's club

KOHL'S

 macy's





Sainsbury's

High Fashion Speciality Retailers

Bershka

next
NEXT.CO.UK

LANE BRYANT

GAP

TOMMY HILFIGER


BANANA REPUBLIC

OLD NAVY

AMERICAN EAGLE


RALPH LAUREN

NORDSTROM

Calvin Klein



32,000

people are ensuring
the environment
keeps thriving

Sustainability; A value deeply embedded in every Pearl Global employee

Management
Team

Pioneers of Our Vision

Mr. Deepak Seth
(Chairman)



Mr. Pulkit Seth
(Vice-Chairman &
Non-Executive Director)



The Leaders Behind Our Mission



Pallab Banerjee
Managing Director



Ratna Singh
Group CHRO



Sanjay Gandhi
Group CFO



Core Team



Pankaj Bhasin
CEO- Woven India



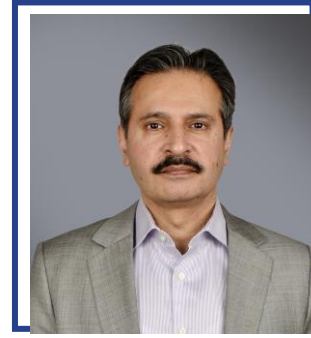
Sundeep Chatrath
CEO-Knits India



Gurusankar Gurumoorthy
CEO-Vietnam



Sanjay Sarkar
Country Director - Bangladesh



Rajesh Ajwani
Commissioner Indonesia



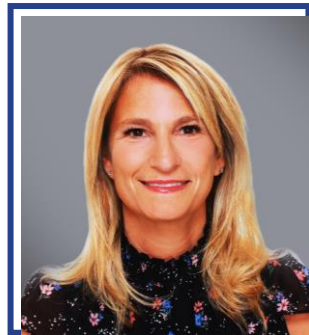
Dr. Mahesh Seth
Vice President – US
Operations



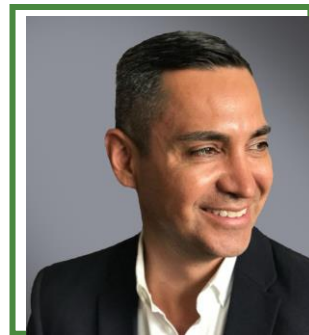
Vikas Mehra
CEO-Bangladesh



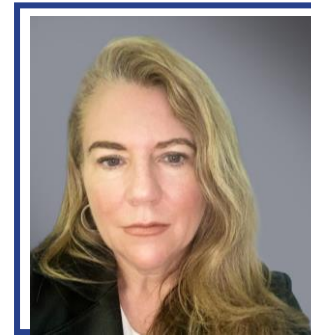
Jeff Kreindel
Executive Vice President - US



Amy Rosenberg
VP Merchandising - US



David Ayala
Global Creative Director - US



Jo Hales
Senior Vice President UK





**Key Industry Growth
Driver & Way Forward**

Trend Forecasting

1

PLI Scheme

- Scheme was approved with a total outlay of Rs 107bn
- Likely to provide incentives, ~3-11% on incremental revenue yoy for 5 years on greenfield as well as brownfield investments

2

MITRA Scheme

- Under the scheme, 7 mega parks will be set up in the country over the upcoming three years with plug and play facilities in a bid to create global champions in exports

3

Extension of RoSCTL scheme

- The extension is likely to benefit exporters of Apparel/Garment and Home Textiles products since the extension till 31st March 2024 ensures a stable and predictable policy regime for three years.

4

Notification of RoDTEP rates

- The announcement is likely to benefit the entire value chain of textiles since exporters can now claim rebate either under RoSCTL or RoDEP theme.

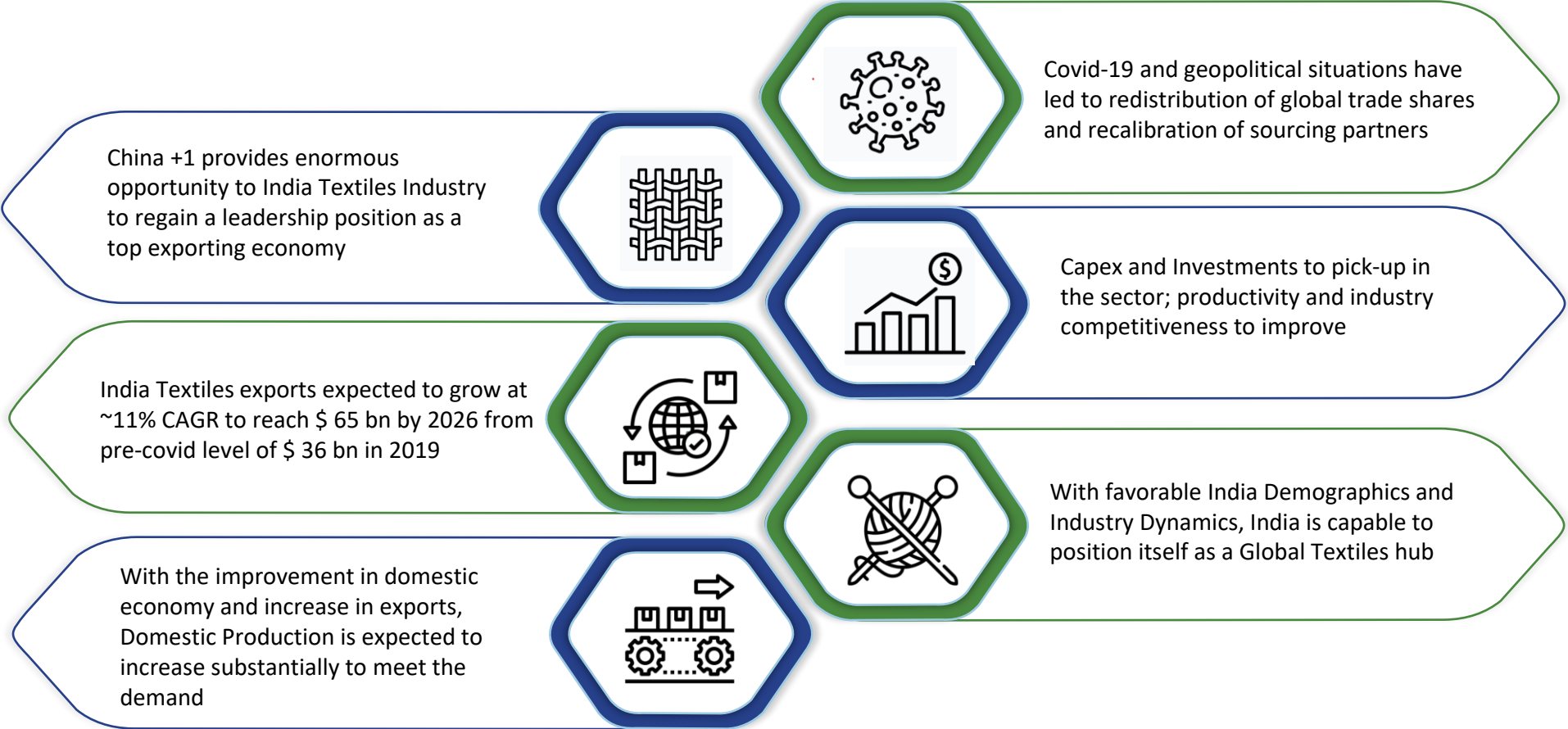
5

Free Trade Agreement

- With the IndAUS ECTA, India's exports of textiles and apparels are expected to go up to US \$ 1100 mn in the next 3 years



China +1 Provides Huge Opportunity For Textiles & Apparel Players



“China+1” Strategy will be beneficial for Global Textile Industry specifically for Indian Textiles





Multinational Presence

- 21 manufacturing facilities spread across 4 countries.
- Present in 2 out of 4 supply chain areas
- End to End supply chain provider
- Ability to do Concept + Store



Robust Design Team

- Fashion trend analysis by talented design personnel
- Modern unique techniques like 3D CAD rendering, 3D Optitex, CLO and Browzwear used to craft the final product



Shift Towards Asset Light Model

- Partnership model to drive next leg of growth
- No lead time
- Improved return ratios going ahead



Strong Customer Relationship

- Long term relationship with well known large retail format stores (Kohl's, Macy's, Target Australia and others) and specialised retail format stores (Bershka, Gap, Old Navy and others)

Key Strengths

Outcome

Increasing wallet share from existing customers

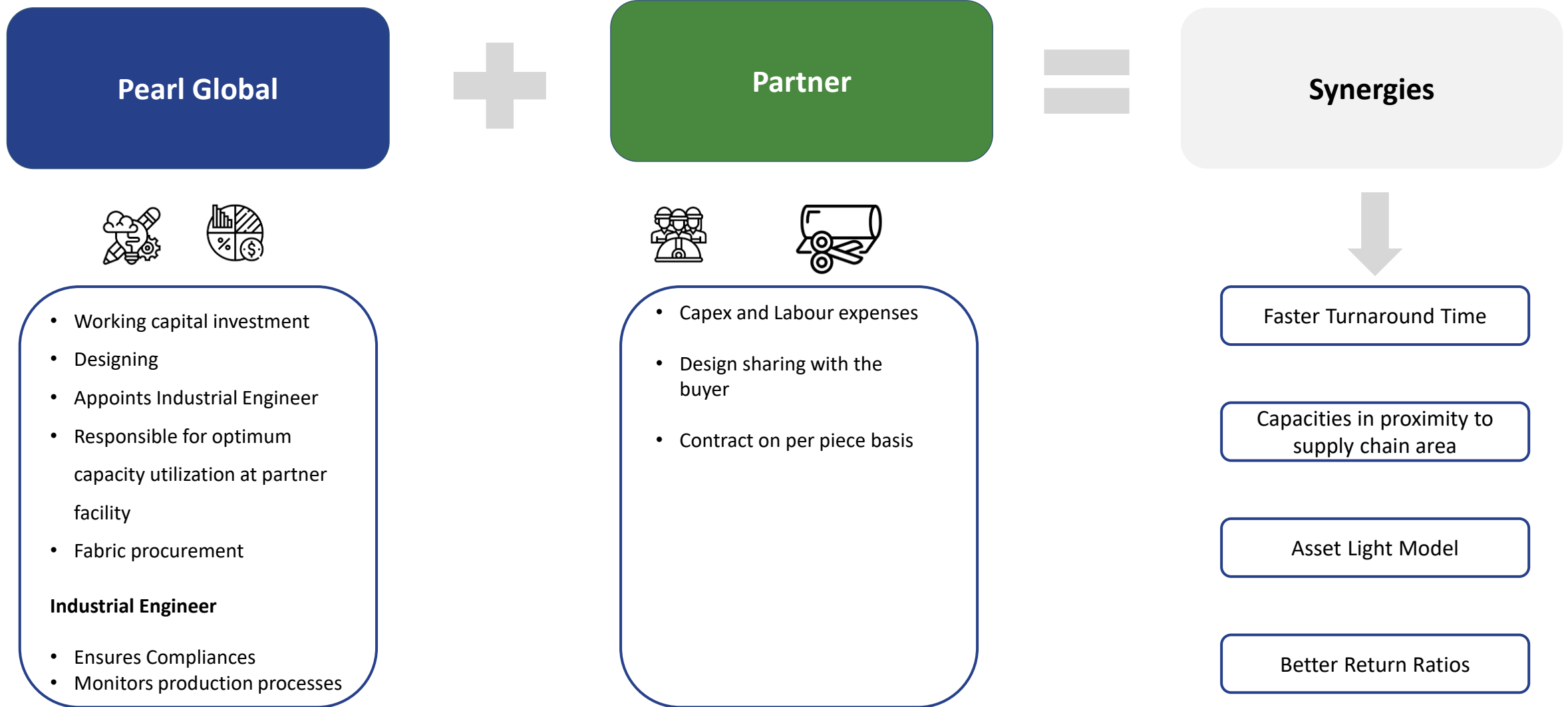
Acquiring new customers

Expanding to new geographies

Providing new product categories



Synergies From Partnership Model



Robust Risk Mitigation Practices



Customer

Retention & Growth

- Direct Relationship with all customers
- Continuous monitoring of the customer's market

Payment Security

- Credit Assessment before onboarding a new customer
- Preshipment & post shipment coverage



Product

Quality

- Quality systems & practices aligned closely with customer's expectations
- Constant touch with customer representatives to facilitate process improvements
- Customers certified Pearl associates to certify the products on their behalf



Raw Material

Prices and Supply Chain

- Early projection and booking of raw materials
- Strategic and transparent relationship with key supplier

Inventory

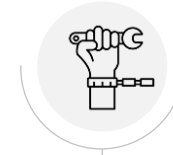
- All production is against confirmed sale orders
- Periodic review or physical count & utilization of stock



Currency

Fluctuation

- Natural hedge in all overseas operations
- India-export- forward cover
- Import-only minimal procurement-no big impact



Social & Ethical Compliance

Non-Compliance

- Robust internal control and compliance system
- Regular monitoring and implementing immediate corrections
- Onboarding of customers only after ensuring complete compliance standards



Cashflow

Debt Repayment & servicing

- Revised strategy – asset light model- partner with factory rather own set up
- Limit capex and fund through internal resources
- Ensure collection on time



Way Forward and Strategy For Growth



New Customer Acquisition




Optimum Utilization Of Existing Facilities



Geographical Expansion



Growth Through Partnership Facilities



Automation Of Facilities



PLI Scheme To Act As A Growth Engine



PEARL GLOBAL

Exceeding Expectations...Always

**Conscious steps towards
a Sustainable future**



Financial Highlights

Consolidated Profit And Loss Statement

Profit and Loss (INR CRS.)	FY22	FY21	FY20	FY19	FY18
Revenue from Operations	2,713.5	1,490.9	1,685.1	1,757.5	1,496.0
Cost of Goods Sold	1,510.6	768.9	808.3	873.3	825.5
Gross Profit	1,202.9	722.0	876.8	884.2	670.5
Gross Profit Margin	44.3%	48.4%	52.0%	50.3%	44.8%
Employee Cost	458.6	325.3	393.2	360.0	237.3
Other Expenses	603.7	336.1	416.7	436.1	408.5
EBITDA	140.6	60.6	66.9	88.1	24.8
EBITDA Margin	5.2%	4.1%	4.0%	5.0%	1.7%
Depreciation*	48.3	44.1	42	25.9	22.6
Other Income	33.5	23.5	49	33.9	47.6
EBIT	125.8	40.0	73.9	96.1	49.8
EBIT Margin	4.6%	2.7%	5.0%	7.1%	4.7%
Finance Cost	46.6	41.3	42.0	30.3	25.5
Exceptional Item Gain / (Loss)	6.7	12.7	-0.7	17.2	8.24
PBT	85.8	11.4	31.2	82.9	32.4
PBT Margin	3.2%	0.8%	1.9%	4.7%	2.2%
Tax	15.7	-6.1	9.5	15.8	9.3
PAT	70.1	17.5	21.7	67.1	23.1
PAT Margin	2.6%	1.2%	1.2%	4.8%	2.1%
EPS	31.5	8.0	9.95	31.06	11.12



*includes leasehold amortization from FY20 onwards

Consolidated Balance Sheet

Assets (INR CRS.)	Mar-22	Mar-21	Mar-20	Mar-19	Mar-18
Non - Current Assets	533.9	533.2	543.1	434.6	387.2
Property Plant & Equipment	258.2	213.8	221.9	243.6	179.0
CWIP	15.2	47.0	36.1	7.8	8.4
Goodwill	18.0	17.6	17.9	19.0	18.2
Intangible assets	0.7	0.5	0.8	1.1	1.3
Right of use asset	111.7	98.0	107.3	-	
Investment Properties	59.0	60.5	73.9	74.3	75.1
Investment - Others	49.9	47.4	30.8	32.8	31.1
Loans	1.3	21.7	24.5	22.9	21.0
Other Financial Assets	11.0	12.2	13.6	14.0	21.9
Deferred Tax Assets (Net)	0.9	4.7	0.9	1.0	3.2
Other Non - Current Assets (Net)	2.1	2.1	7.7	13.5	2.1
Other Non Current Tax Assets (net)	6.0	7.7	7.6	4.5	25.9
Current Assets	1,246.7	760.8	709.2	666.9	549.5
Inventories	539.6	278.8	263.9	236.3	210.0
Financial Assets					
(i) Investments	5.3	7.5	6.9	0.0	6.3
(ii) Trade receivables	366.6	242.2	220.4	221.8	142.0
(iii) Cash and cash equivalents	116.9	94.7	88.1	94.3	92.3
(iv) Bank balances	32.9	22.3	21.7	17.1	4.4
(v) Loans	34.6	17.1	17.3	16.6	3.3
Other Financial Assets	5.9	0.9	1.1	16.9	20.4
Other current assets	144.9	97.3			
Total Assets	1,780.6	1,294.0	1,252.3	1,101.5	936.7

Equity & Liabilities (INR CRS.)	Mar-22	Mar-21	Mar-20	Mar-19	Mar-18
Total Equity	614.9	530.2	500.6	469.9	395.1
Share Capital	21.7	21.7	21.7	21.7	21.7
Reserves & Surplus	577.3	495.6	478.9	448.2	373.5
Non Controlling Interest	15.9	12.9	13.0	11.5	9.7
Non-Current Liabilities	254.8	244.5	225.4	140.9	105.6
Financial Liabilities					
(i) Borrowings	123.8	124.6	99.8	81.1	49.0
(ii) Lease Liabilities	71.6	65.3	69.9	-	-
(iii) Other Financial Liabilities	2.4	1.4	2.5	2.2	1.6
Provisions	24.3	23.1	20.8	21.1	18.8
Other Non Current Liabilities	30.1	30.1	30.0	33.1	36.2
Deferred Tax Liabilities	2.6	0.0	2.5	3.4	0.0
Current Liabilities	911.0	519.3	513.3	479.2	426.3
Financial Liabilities					
(i) Borrowings	440.3	199.9	257.2	234.9	213.5
(ii) Trade Payables	438.7	246.8	181.1	181.1	109.3
(iii) Lease	8.8	8.6	8.1	0.0	0.0
(iv) Other Financial Liabilities	9.0	54.6	57.2	51.6	80.2
Other Current Liabilities	9.5	7.4	8.6	8.7	6.2
Current tax liabilities (net)	2.2	0.9	0.6	2.2	16.5
Provisions	2.4	1.1	0.7	0.8	0.6
Total Equity & Liabilities	1,780.6	1,294.0	1,252.3	1,101.5	936.7



Consolidated Cash Flow

Particulars (INR CRS.)	FY22	FY21	FY20	FY19	FY18
Net Profit Before Tax	85.8	11.4	31.2	82.9	32.4
Adjustments for: Non -Cash Items / Other Investment or Financial Items	76.2	61.3	93.2	51.5	42.6
Operating profit before working capital changes	162.1	72.6	124.5	134.5	75
Changes in working capital	-239.2	38.1	-44.4	-13.8	-28
Cash generated from/(used in) operations	-77.1	110.8	80.1	120.7	47
Taxes paid (net of refund)	-7.7	-3.5	-17.1	-28.7	5.2
Exceptional Items	-6.7	-12.7	-0.7	-17.2	-8.2
Net Cash from Operating Activities	-91.5	94.6	62.3	74.8	44.0
Net Cash from Investing Activities	-39.6	-26.0	-84.5	-58.6	-58.5
Net Cash from Financing Activities	153.3	-61.9	14.6	-14.1	30.8
Net Decrease in Cash and Cash equivalents	22.1	6.6	-6.3	2.1	5.9
Add: Cash & Cash equivalents at the beginning of the period	94.7	88.1	94.3	92.3	86.4
Cash & Cash equivalents at the end of the period	116.9	94.7	88.1	94.3	92.3



Standalone Profit and Loss Statement

Profit and Loss (INR CRS.)	FY22	FY21	FY20	FY19	FY18
Revenue from Operations	933.8	771.4	825.3	840.3	710.8
Cost of Goods Sold	428.1	473.1	399.6	417.1	348.6
Gross Profit	505.7	298.3	425.7	423.2	362.2
Gross Profit Margin	54.2%	38.7%	51.6%	50.4%	51.0%
Employee Cost	152.2	107.8	150.2	131.9	119.6
Other Expenses	312.5	194.3	257.0	254.1	259.9
EBITDA	41.0	-3.8	18.5	37.2	-17.3
EBITDA Margin	4.4%	-0.5%	2.2%	4.4%	-2.4%
Depreciation*	17.6	18.1	17.6	12.9	12.7
Other Income	32.0	24.1	33.4	26.3	48.0
EBIT	55.4	2.2	34.3	50.6	18.0
EBIT Margin	5.9%	0.3%	4.2%	6.0%	2.5%
Finance Cost	25.9	24.0	24.5	21.5	19.3
Exceptional Item Gain / (Loss)	6.6	12.6	1.2	2.8	8.1
PBT	36.1	-9.2	11.0	31.9	6.8
PBT Margin	3.9%	-1.2%	1.3%	3.8%	1.0%
Tax	8.9	-10	5.9	10.4	4.1
PAT	27.2	0.8	5.1	21.5	2.6
PAT Margin	2.9%	0.1%	0.6%	2.6%	0.4%
EPS	12.5	0.4	2.3	9.9	1.2

*includes leasehold amortization from FY20 onwards

Standalone Balance Sheet

Assets (INR CRS.)	Mar-22	Mar-21	Mar-20	Mar-19	Mar-18
Non - Current Assets	344.8	360.6	377.8	347.2	348.5
Property Plant & Equipment	124.1	128.5	131.7	131.5	125.6
CWIP	0.0	0.4	2.3	1.6	0.5
Intangible assets	0.7	0.5	0.8	1.1	1.3
Right of use asset	21.7	29.0	26.1		
Investment Properties	59.0	60.5	73.9	74.3	75.1
Investments	126.4	119.1	118.7	118.6	131.3
Loans	0.1	4.9	5.1	4.7	4.5
Other Financial Assets	6.5	7.5	9.4	8.4	4.4
Deferred Tax Assets (Net)	0.0	3.9	0.0	0.0	1.1
Other Non Current Assets (Net)	0.5	0.5	4.7	3.9	3.2
Other Non Current Tax Assets (net)	5.7	5.6	5.0	3.0	1.3
Current Assets	518.7	416.3	336.2	341.7	304.6
Inventories	221.8	132.7	147.9	135.1	120.0
Financial Assets					
(i) Investments	5.3	7.5	6.9	0.0	6.3
(ii) Trade receivables	115.9	145.2	97.4	111.3	87.5
(iii) Cash and cash equivalents	43.2	46.0	20.6	22.3	20.6
(iv) Bank Balances	21.4	11.1	9.3	14.5	4.3
(v) Loans	0.4	3.2	3.3	3.5	3.3
Other Financial Assets	4.9	2.1	0.9	15.7	20.4
Other Current Assets	105.8	68.4	49.9	39.1	42.2
Total Assets	863.5	777.0	714.0	688.9	653.1

Equity & Liabilities (INR CRS.)	Mar-22	Mar-21	Mar-20	Mar-19	Mar-18
Total Equity	343.5	313.8	305.9	316.2	298.6
Share Capital	21.7	21.7	21.7	21.7	21.7
Reserves & Surplus	321.8	292.1	284.2	294.5	276.9
Non-Current Liabilities	148.9	151.3	125.7	75.3	84.2
Financial Liabilities					
(i) Borrowings	83.3	82.0	84.4	31.9	39.5
(ii) Lease Liabilities	21.5	28.4	-	-	-
(iii) Other Financial Liabilities	2.4	1.4	0.0	2.2	1.6
Provisions	9.3	9.4	8.8	7.1	8.6
Other Non Current Liabilities	30.1	30.1	30.0	30.8	34.6
Deferred Tax Liabilities	2.3	0.0	2.5	3.4	0.0
Current Liabilities	371.1	311.9	282.4	297.3	270.3
Financial Liabilities					
(i) Borrowings	176.3	133.3	152.5	161.8	182.9
(ii) Trade Payables	178.8	161.7	118.8	105.1	71.0
(iii) Lease	3.9	3.8	2.4	0.0	
(iv) Other Financial Liabilities	2.4	5.3	0.0	19.4	10.1
Other Current Liabilities	8.5	7.1	8.2	8.4	5.8
Current tax liabilities (net)	-	-	0.0	1.9	-
Provisions	1.1	0.7	0.6	0.7	0.5
Total Equity & Liabilities	863.5	777.0	714.0	688.9	653.1



Standalone Cash Flow

Particulars (INR CRS.)	FY22	FY21	FY20	FY19	FY18
Net Profit Before Tax	36.1	-9.2	10.9	31.9	6.8
Adjustments for: Non -Cash Items / Other Investment or Financial Items	27.2	42.3	33.7	20.5	27.4
Operating profit before working capital changes	63.3	33.1	44.6	52.4	34.1
Changes in working capital	-76.0	21.8	-22.9	-15.5	-56.7
Cash generated from Operations	-12.7	54.9	21.7	36.9	-22.6
Taxes paid (net of refund)	-4.1	-1.0	-8.7	-7.4	2.4
Exceptional Items	-6.6	-12.6	-0.7	-17.2	-8.2
Net Cash from Operating Activities	-23.3	41.3	12.3	12.3	-28.4
Net Cash from Investing Activities	6.9	15.2	-32.1	22.6	7.2
Net Cash from Financing Activities	13.6	-31.0	18.5	-47.5	23.5
Net Decrease in Cash and Cash equivalents	-2.8	25.4	-1.7	1.8	-2.4
Add: Cash & Cash equivalents at the beginning of the period	46.0	20.6	22.3	20.6	23.0
Cash & Cash equivalents at the end of the period	43.2	46.0	20.6	22.3	20.6



We're environmentally sustainable, for real!

TAGS 
TAGS ARE MADE WITH
RECYCLED PAPER 

GARMENT DYED WITH
GOTS CERTIFIED
NATURAL DYES 

100% ORGANIC COTTON
SINGLE JERSEY

OEKO-TEX®
INSPIRING CONFIDENCE
MADE IN GREEN
M10000002 Institute
Tested for harmful substances and produced
sustainably in accordance with OEKO-TEX®
guidelines. www.madeingreen.com

WASH CARE
OEKO-TEX

OEKO-TEX®
CONFIDENCE IN TEXTILES
STANDARD 100
00000000 Institute
Tested for harmful substances.
www.oeko-tex.com/standard100

POLYBAG



RECYCLE POLYESTER
SEWING THREAD



Sustainability

We believe in the Triple bottom approach : People, Planet and Profit

Environmental sustainability forms one of the key pillar of our social responsibility. To attain the highest level of sustainability standards, we have the following measures in place to fulfil our responsibility as a clothing vendor


- ✓ A framework that enables to meet environmental performance expectations, ensure regulatory compliance, minimize environmental risks and establish & implement long term environmental strategies
- ✓ A measuring tool that helps us map. Plan and implement meaningful improvements that protect the well-being of factory workers, local communities and the environment
- ✓ Adopted the world's leading processing standard for textiles made from organic fibers




As a sustainable clothing manufacturer, we are committed to seeking new and innovative ways to reduce our carbon footprints, one such initiative towards this goal is the adoption of renewable energy in our facilities




Ongoing sustainable initiatives


 **Ozone**
Eco Friendly
Reduce Water Consumption

 **Magic Box**
Eco Friendly
Reduce Water, Chemical
& Energy Consumption


 **ETP/WTP/STP**
Recycle & Re-use Water
Treatment Solution


 **C.W.M.U**
Central Water
Monitoring Unit

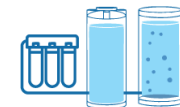
 **Laser**
Eco Friendly Innovative, Robust & Save's
Water, Chemical & Energy

 **PNG BOILER**
PNG run boilers for reduced emissions

 **ECO FRIENDLY**
Recycled Poly Stone, Longer Life Span
Replacement Of Pumic Stone With No Residue

 **Environmental Impact Measurement**
Software to monitor the impact of garment
finishing processes

 **Solar Power Generation**
Implemented in Chennai. Planned for other
facilities

 **Uv Filtration Plant**
Facilitate recycle & re-use of water in laundry,
Toilets Gardening, Fire Pump



We believe in the long-term preservation of our resources

✓ To create a circular economy by eliminating waste & utilizing resources

TAGS
TAGS ARE MADE WITH RECYCLED PAPER

RECYCLE POLY POCKETING FABRIC

ZIPPER
ECO-FRIENDLY METAL FINISHES

BIODEGRADABLE FAKE LEATHER

POLYBAG
RECYCLED POLY BAGS
LDPE

SHANK & RIVET
ECO-FRIENDLY METAL FINISHES

LABELS ARE MADE WITH REPREVE YARNS

REPREVE SEWING THREAD

SUSTAINABLE ECO FRIENDLY FABRIC

WASH
M.O.L.E
USING MAGIC BOX, OZONE LASER & SUSTAINABLE CHEMICAL BIO-ENZYME, SOFTENER AND OTHER NON-HAZARDOUS CHEMICAL

TAGS
TAGS ARE MADE WITH RECYCLED PAPER

POLYBAG
RECYCLED POLY BAGS
LDPE

GARMENT DYED WITH
ARCHROMA EARTHCOLORS®

FABRIC:
100% BCI

LABELS MADE WITH
100% RECYCLED POLYESTER

WASH CARE
RECYCLED POLYESTER
OEKO-TAX 100, CLASS 1

M.O.L.E
USING MAGIC BOX, OZONE LASER & SUSTAINABLE CHEMICAL BIO-ENZYME, SOFTENER AND OTHER NON-HAZARDOUS CHEMICAL

REPREVE SEWING THREAD

ZIPPER
ECO-FRIENDLY METAL FINISHES

TAGS
TAGS ARE MADE WITH RECYCLED PAPER

GARMENT DYED WITH
ARCHROMA EARTHCOLORS®

100% ORGANIC COTTON SINGLE JERSEY

M.O.L.E
USING MAGIC BOX, OZONE LASER & SUSTAINABLE CHEMICAL BIO-ENZYME, SOFTENER AND OTHER NON-HAZARDOUS CHEMICAL

WASH CARE
RECYCLED POLYESTER
OEKO-TAX 100, CLASS 1

REPREVE SEWING THREAD

POLYBAG
LDPE
RECYCLED POLY BAGS





2006-2008

- 2006-07: Highest Export in woven garments
- 2007-08: Highest Export in woven garments



2008-2010

- 2008-09: Highest Exports by Young Entrepreneur -1st Position to Pulkit Seth
- 2009-10: Highest Exports in Woven Graments-1st Position & Highest Exports By young entrepreneur -1st Position to Mr. Pulkit Seth



2010-2011

- 2010-11: Highest Exports – Woven Garments- Winner



2011-2012

- 2011-12: Highest Exports Woven Garments- Winner



2012-2015

- 2012-13: Highest Exports BY Young Entrepreneur –Winner- Mr. Pulkit Seth, Vice Chairman, Pearl Global
- 2015-16 : Highest Global Exports (Above 100 Cr and upto Rs.500 Cr) 1st Position



2020-2023

- 2022-23: Recognized as one of the best organizations for women.
- 2020-21: Asia One Most Influential Young Leaders – Mr. Pulkit Seth



For further information, please contact

Company :

PEARL GLOBAL

Exceeding Expectations...Always

CIN: L74899DL1989PLC036849

Mr. Sanjay Gandhi - Group CFO

sanjay.gandhi@pearlglobal.com

www.pearlglobal.com

Investor Relations Advisors :

SGA Strategic Growth Advisors

CIN: U74140MH2010PTC204285

Ms. Brinkle Shah Jariwala / Mr. Rahul Agarwal

brinkle.shah@sgapl.net / rahul.agarwal@sgapl.net

+91 9619385544 / +91 9821438864

www.sgapl.net